



othm[®]
qualifications

AIX
SIGNATURE PROGRAMME





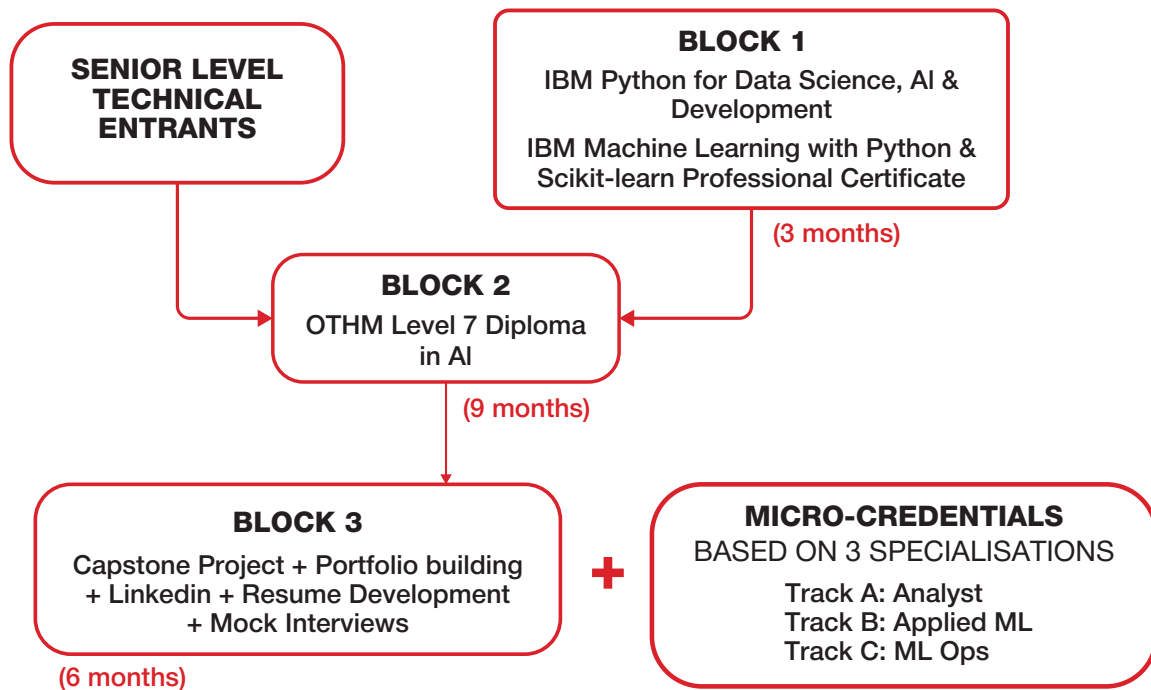
Introduction

APEX ED's AIX Signature Programme provides an academic and practical design framework for learners in the field of Artificial Intelligence. The OTHM framework has been selected for its flexibility and Ofqual recognition; however, the programme is rigorous and extend well beyond the scope of the standard OTHM learning outcomes. The aim is to ensure that students graduate with the skills, certifications, and real-world experience to enter the AI job market globally. Ultimate graduation from the full programme will be contingent upon the successful completion of a broad final assessment process. This includes a comprehensive examination, demonstration of applied AI skills, effective communication, and professional competencies such as CV writing, LinkedIn profile development, and interview readiness.

Programme Overview

The APEX ED AIX Signature Programme is uniquely designed in alignment with real-world employer demands. The programme is structured in 3 Blocks, starting with a 3-month preparatory Block covering IBM Python for Data Science, AI & Development and IBM Machine Learning with Python & Scikit-learn Professional Certificate. Those who complete Block 1, may proceed with Block 2 as the academic core consisting of a 9 month Ofqual-Accredited UK Level 7 Postgraduate Diploma. Professionals who are already in the industry and intend to acquire AI knowledge may only choose to complete Block 2 and opt out from participating in Block 3, the Practicum part of the programme. Block 3 builds upon the theoretical modules from Block 2 with practical, industry-recognised certifications from IBM, Microsoft, AWS, and Google Cloud, in addition to robust career-readiness components.

Programme Structure



Block 1 - Foundational Block (3 months)

- ✓ IBM Python for Data Science, AI & Development
- ✓ IBM Machine Learning with Python & Scikit-learn Professional Certificate



Block 2 - PGD Block (9 months)

Overview

The objective of the OTHM Level 7 Diploma in Artificial Intelligence is to equip learners with an in-depth understanding of contemporary Artificial Intelligence (AI) methodologies, practices, and the evolving technological landscape. This qualification aims to explore both the theoretical underpinnings and practical applications of AI, providing learners with the expertise to engage in discussions, research, and the development of AI systems across various domains.

Upon successful completion of this qualification, learners will possess the knowledge and skills required to work in roles related to AI research, development, and implementation. They will be equipped to pursue further studies or professional roles in sectors such as technology, healthcare, finance, sustainability, and public policy, contributing to the ongoing evolution of AI in society.

Entry Requirements

- Be 21 years or older at the beginning of the course; or
- Relevant Level 6 qualification. Normally an Honours degree (or equivalent) from a recognised institution.
- Demonstration of relevant professional experience. Applicants should have at least 3 years professional experience in the field (learners must check with the delivery centre regarding this experience prior to registering for the programme)

And, must have an:

- Understanding of Object Oriented Programming (OOP).
- Ability to program in Python.
- Understanding of two or more of the following mathematical and scientific Python libraries: 'numpy', 'pandas', 'scipy', and 'matplotlib'.

Equivalences

The OTHM Level 7 diplomas on the Regulated Qualifications Framework (RQF) are at the same level as master's degrees. However, they are shorter (120 credits) and learners will have to proceed to the dissertation stage (60 credits) with university to achieve a full masters programme.

Qualification Structure

The OTHM Level 7 Diploma in Artificial Intelligence consists of 6 mandatory units, 120 credits, 1200 hours Total Qualification Time (TQT) and the recommended Guided Learning Hours (GLH) for this qualification is a minimum of 600 hours.

Mandatory Units, Credits and Durations

MODULE	Credits	Duration (Months)
• Introduction to Artificial Intelligence	20	2
• Artificial Intelligence and Sustainability	20	1
• Ethics, Fairness and Explanation in Artificial Intelligence	20	1
• Deep Learning	20	2
• Intelligent Agents	20	2
• Research Methods	20	1
Total Credits & Months	120	9

Block 3 - Practicum Block (6 months)

Block 3 will consist of Career Readiness Components and Micro-credentials

Career Readiness Components

- Resume Building Workshops
- LinkedIn Profile Optimisation
- Interview Coaching and Mock Sessions
- GitHub Portfolio with Capstone and Mini Projects



Targeted Job Roles and Micro-credentials

TRACK	TARGETED ROLES	INDUSTRY MICRO-CREDENTIAL
TRACK A Analyst	AI/BI/Data Analyst	Microsoft PL-300: Power BI Data Analyst (Associate)
TRACK B Applied ML*	ML Engineer Data Scientist	Microsoft DP-100: Azure Data Scientist or AWS Certified machine learning Engineer
TRACK C ML Ops	ML Engineer	Google Cloud Professional Machine Learning Engineer or AWS Certified machine learning Engineer (Associate)

**The Applied ML Track consists of two credentials, one of which may be chosen based on the student's preference. Students who wish to pursue a more ML-focused path may opt for the AWS certification.*

Students will be given preparatory support for the final exams of these credentials through access to Coursera courses by the relevant vendor for exam and test preparation through platforms like Whizlabs, MeasureUp etc. Furthermore, students will receive portfolio building training including additional support to deploy their projects from the micro-credentials as portfolio projects.

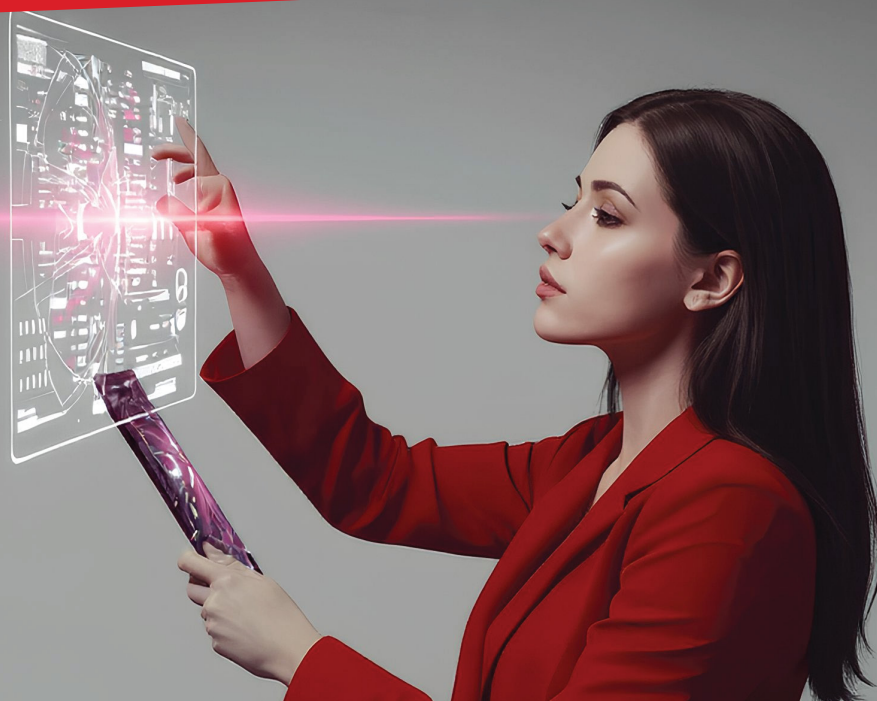
Target Graduate **Job Roles**

TARGETED ROLE	TRACK
AI/BI/Data Analyst (Junior to Associate)	A
Data Scientist (Junior to Associate)	B
Machine Learning Engineer (Junior)	B & C
AI Ethics & Governance Officer	GENERAL
AI Project Coordinator or Research Assistant	GENERAL

Progression

The OTHM Level 7 Diploma in Artificial Intelligence enables learners to progress into or within employment and/or continue their further study.

As this qualification is approved and regulated by Ofqual (Office of the Qualifications and Examinations Regulation), learners may be eligible to progress to Master's top-up at many universities in the UK and overseas with advanced standing.



Contact Information



EUROPE

1 Trafalgar Square
Northumberland Ave London
WC2N 5BW, UK



MIDDLE EAST (UAE)

Dubai World Trade Centre
C1, Dubai, UAE



MIDDLE EAST (KSA)

Hamad Tower 4F, Al Olaya
Riyadh 12584, SA



NORTH AMERICA

IA Tower, Montreal QC
H3A 3H3, Canada



S.E.ASIA

1 Connaught Road
28/F AIA Central
Hong Kong



SOUTH ASIA

L26, East Tower
World Trade Center
Colombo 00100, SL

Accreditation and Association



T : +44.20.3287.3323
E : info@apexed.co.uk
W : www.apexed.co.uk





Apex Ed

A Foundation For Life